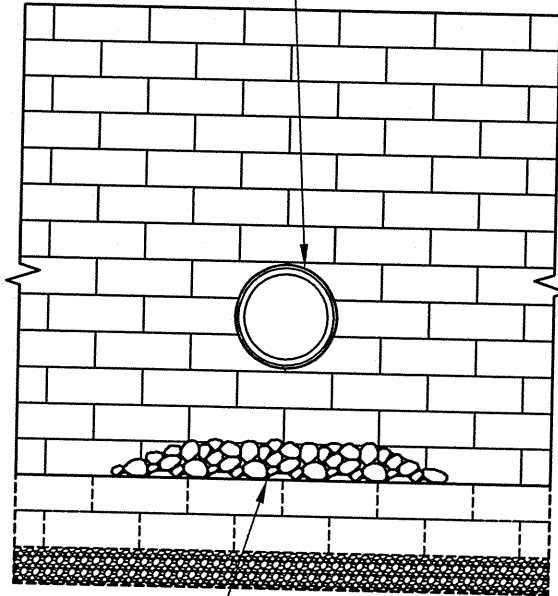
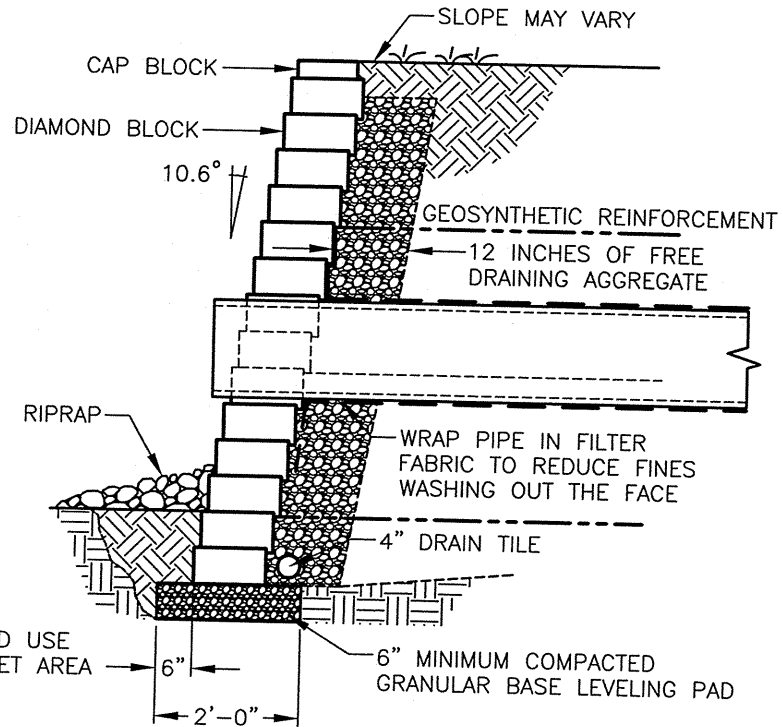


HAND CUT BLOCK UNITS
TO WITHIN 1/2" OF PIPE



SCOUR PROTECTION - AS REQUIRED USE
RIPRAP OR PRECAST SLAB IN OUTLET AREA

FACE VIEW



SIDE VIEW

ANCHOR DIAMOND[®]
PIPE THROUGH WALL - LOW FLOW
(SCALE: 3/8" = 1'-0")



These graphical representations are intended for preliminary design purposes only, and are not to be used for construction without the signature of a registered professional engineer.

All information herein © 2005 Anchor Wall Systems

Drawn By:

AWS

Date:

4/26/2005

Scale:

3/8" = 1'-0"

Drawing Title:

**ANCHOR DIAMOND
LOW FLOW PIPE THRU WALL**

Project Information:

ANCHOR RETAINING WALL SYSTEMS
TYPICAL WALL DETAILS